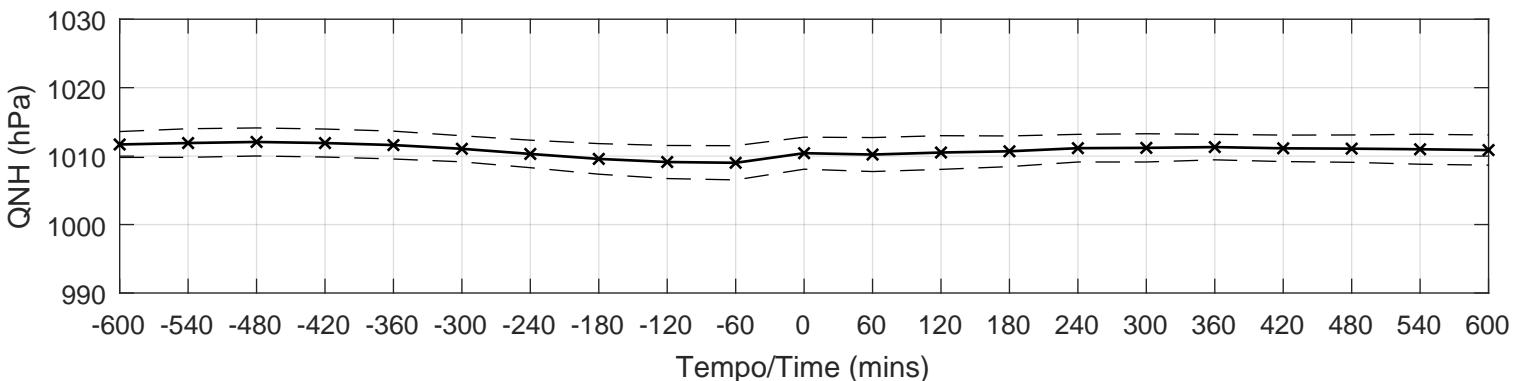
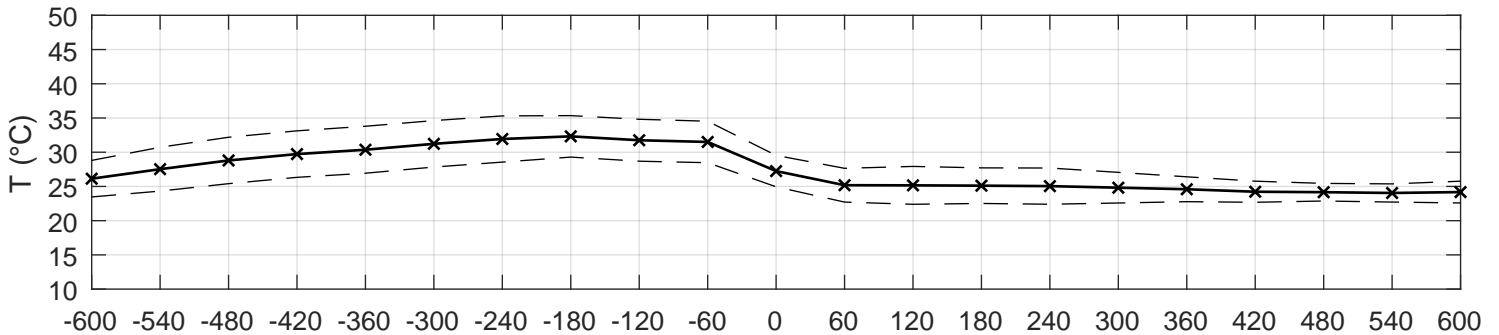
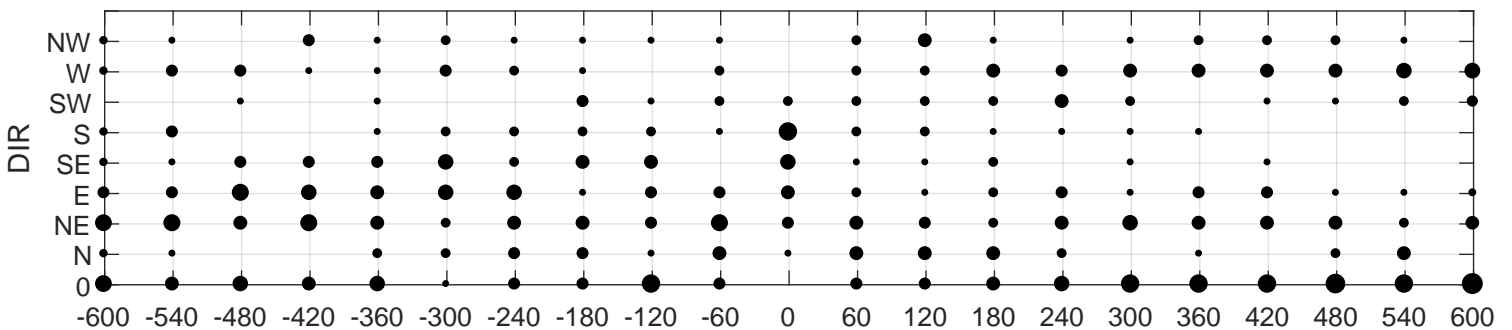
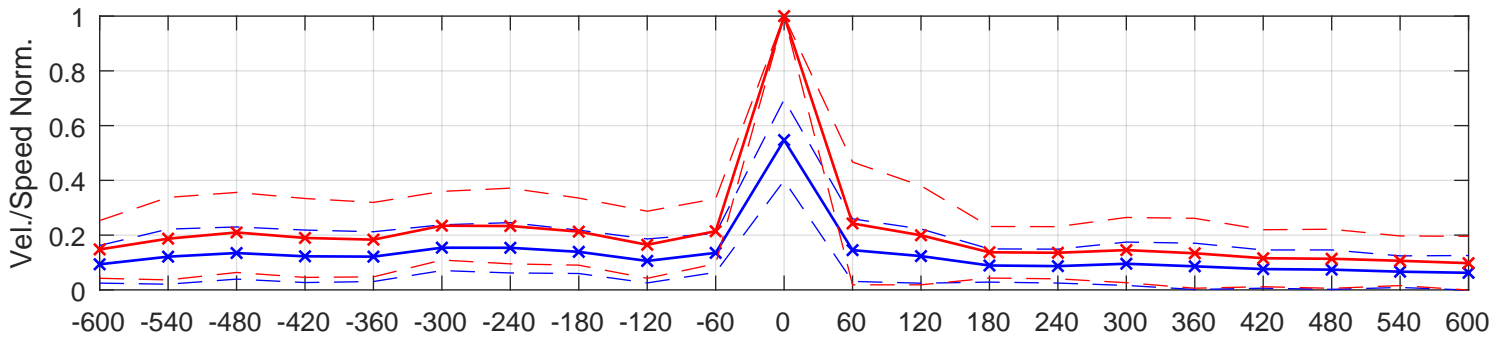


Desenvolvimento Médio dos Ventos Extremos/Mean Development of Extreme Winds (N_M)

SBMA/82563 (MSS)

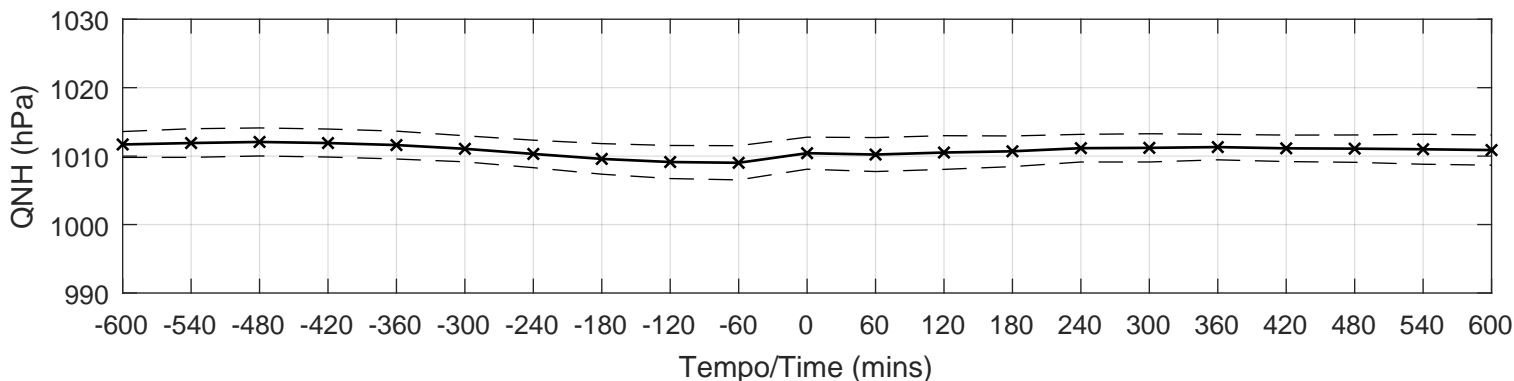
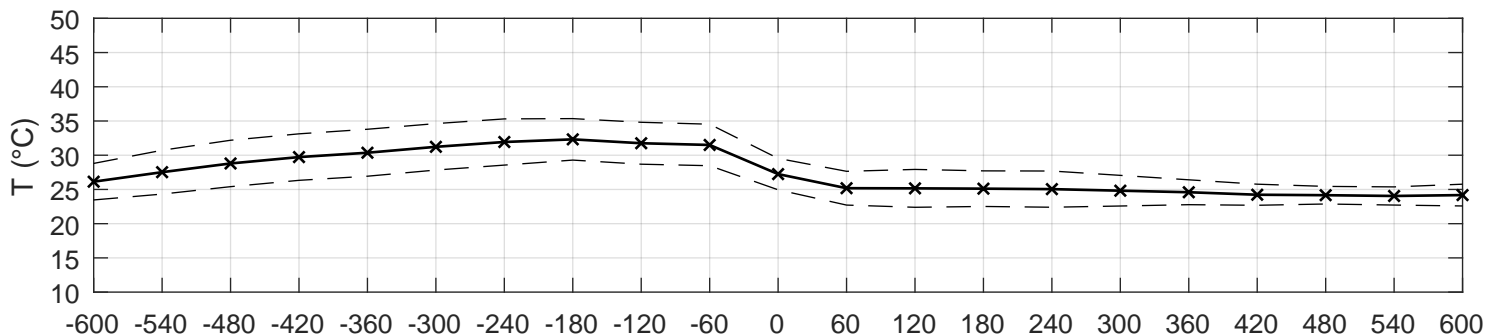
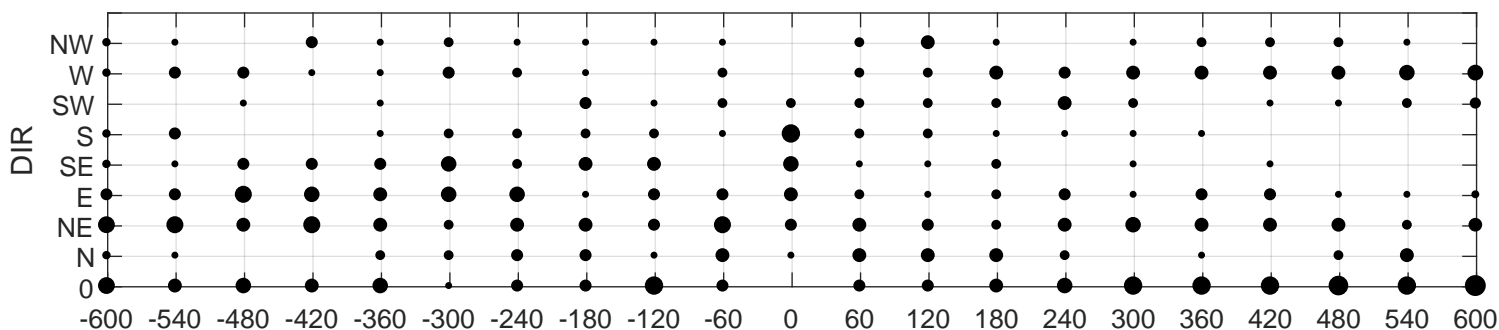
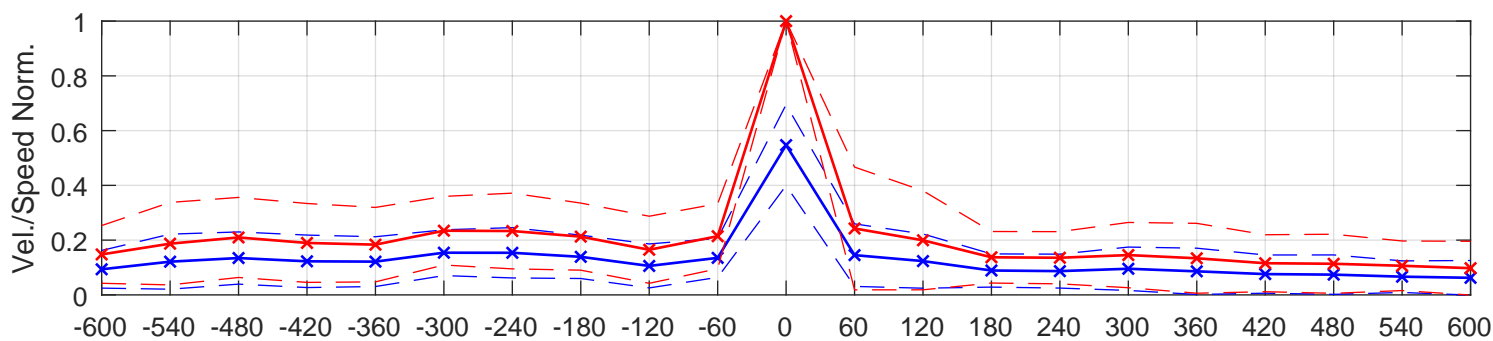
Fator de Rajada Gust Factor	Razões de Pico Peak Ratios	Δ Temp. & Press.	Temporada Predominante Predominant Season	Tempestade Elétrica Thunderstorm
$G_V = 2.2$	$R_{-6} = 5.4$	$T_{med,3} = 31.9\text{ }^\circ\text{C}$	[12,1,2] meses/months	95.5% dos casos/of cases
Direção do Vento Wind Direction	$R_{-3} = 5.2$	$\Delta T_{min,3} = -7.2\text{ }^\circ\text{C}$	Horários Predominantes Predominant Hours	
DIR = S (32%)	$R_{+3} = 5.7$	$\Delta Q_{max,3} = 2.2\text{ hPa}$	[20,21,22] UTC	



Desenvolvimento Médio dos Ventos Não-Sinóticos/Mean Development of Non-Synoptic Winds (N_N)

SBMA/82563 (MSS)

Fator de Rajada Gust Factor	Razões de Pico Peak Ratios	Δ Temp. & Press.	Temporada Predominante Predominant Season	Tempestade Elétrica Thunderstorm
$G_V = 2.2$	$R_{-6} = 5.4$	$T_{med,3} = 31.9 \text{ }^\circ\text{C}$	[12,1,2] meses/months	95.5% dos casos/of cases
Direção do Vento Wind Direction	$R_{-3} = 5.2$	$\Delta T_{min,3} = -7.2 \text{ }^\circ\text{C}$	Horários Predominantes Predominant Hours	
DIR = S (32%)	$R_{+3} = 5.7$	$\Delta Q_{max,3} = 2.2 \text{ hPa}$	[20,21,22] UTC	



Desenvolvimento Médio dos Ventos Sinóticos/Mean Development of Synoptic Winds (N_3)

SBMA/82563 (MSS)

Fator de Rajada Gust Factor	Razões de Pico Peak Ratios	Δ Temp. & Press.	Temporada Predominante Predominant Season	Tempestade Elétrica Thunderstorm
$G_V = []$	$R_{-6} = 2.7$	$T_{med,3} = 30.6 \text{ }^\circ\text{C}$	[6,7,8] meses/months	0.0% dos casos/of cases
Direção do Vento Wind Direction	$R_{-3} = 1.8$	$\Delta T_{min,3} = -0.1 \text{ }^\circ\text{C}$	Horários Predominantes Predominant Hours	
DIR = E (50%)	$R_{+3} = 1.9$	$\Delta Q_{max,3} = 0.2 \text{ hPa}$	[14,15,16] UTC	
	$R_{+6} = 2.3$			

